

# Mounting a Smart Lock Ultra with a Universal Cylinder

This instruction concerns:

NUKI UNIVERSAL CYLINDER

SMART LOCK ULTRA

## In this instruction

[Mounting parts for the Nuki Universal Cylinder](#)

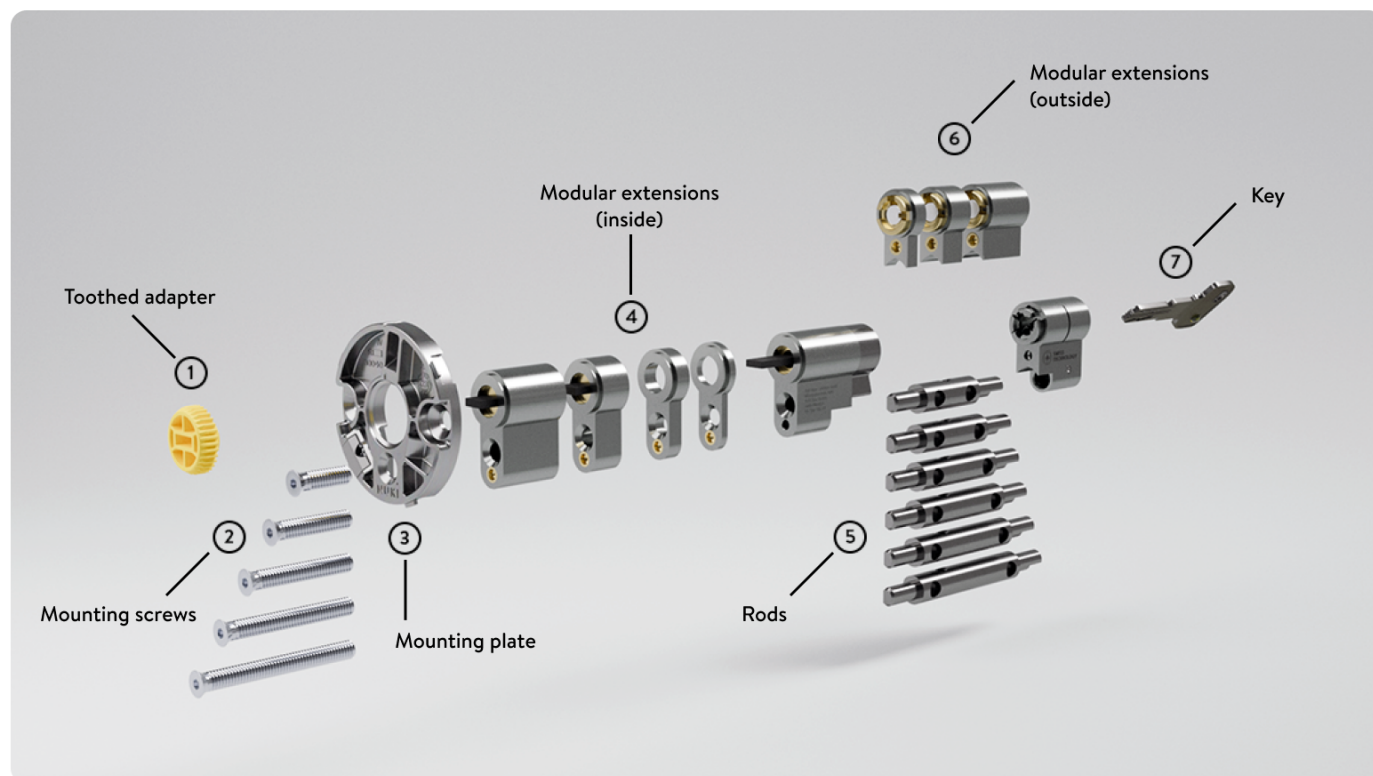
[Mounting instructions: Smart Lock Ultra + Universal Cylinder](#)



### Tip: Use the Nuki App

We recommend using the Nuki App to mount the Smart Lock Ultra with the Universal Cylinder. Simply open the Nuki App, tap on the menu (three bars at the top left corner), and select "Manage devices". If you are new to Nuki, open the App and select "Set up device".

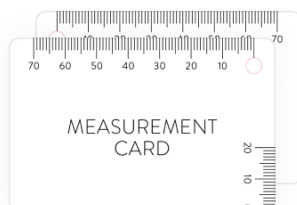
## Mounting parts for the Nuki Universal Cylinder



## Also included in the delivery



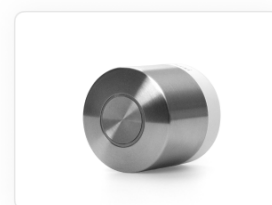
Security Card



Measurement Card



Allen wrench



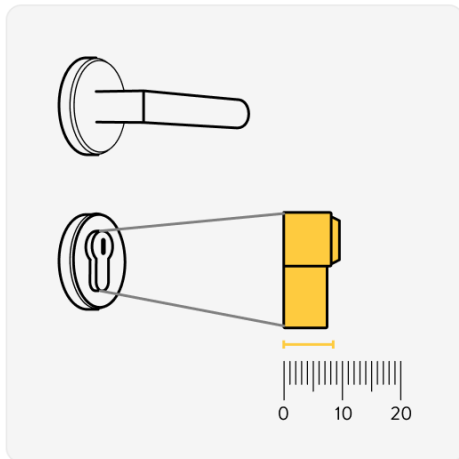
Smart Lock Ultra

**Note:**

You will need a screwdriver to change the cylinder.



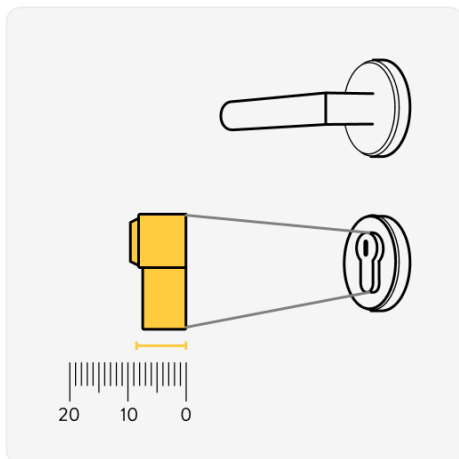
## Mounting instructions: Smart Lock Ultra with a Universal Cylinder



### 1. Measure the overhang of the cylinder on the inside

Measure the overhang of the existing cylinder on the **inside** of the door using the measurement card. Note the measured number.

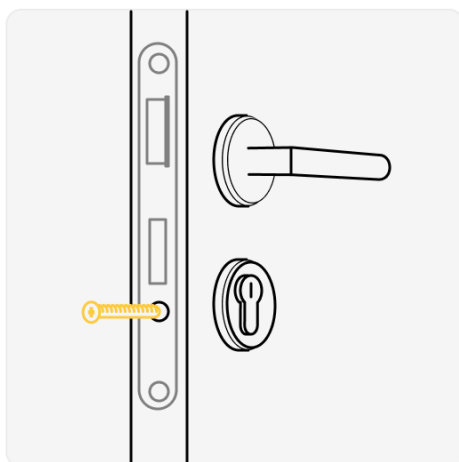
If there is no overhang on the inside, note 0.



### 2. Measure the overhang of the cylinder on the outside

Measure the overhang of the existing cylinder on the **outside** of the door using the measurement card. Note the measured number.

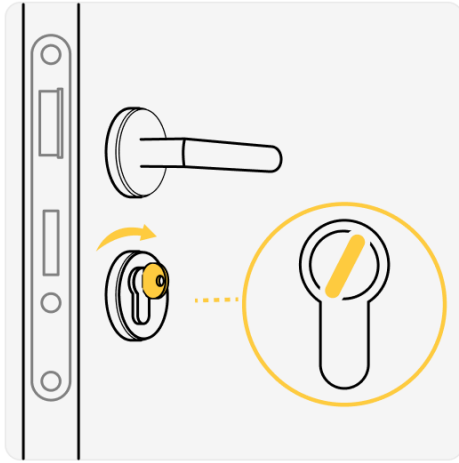
Is your door equipped with a protective fitting or a protective rosette? Note 0.



### 3. Remove the existing cylinder

Open your door: Now, you have a clear view of the latch and the deadbolt that locks the door. There is a retaining screw under the deadbolt that holds the cylinder in place.

Remove the retaining screw from the door.



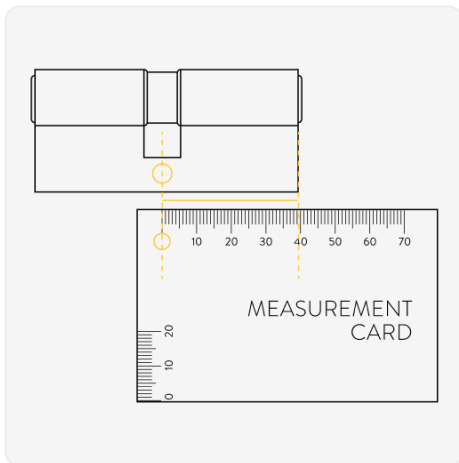
Now, insert the key into the existing cylinder on the inside. Turn the key slightly clockwise to about 1 o'clock.

Now, you can pull out the cylinder with the inserted key.



### Tip!

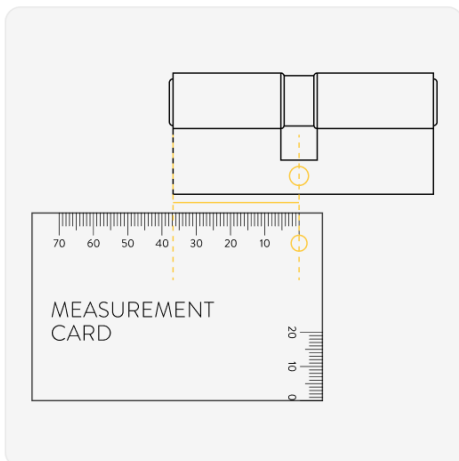
You cannot pull out the cylinder? Please try turning the key counterclockwise.



## 4. Determine the inner length of the cylinder

Use the removed cylinder as a model to assemble your Universal Cylinder to the correct length.

- Measure the **inner length** of the removed cylinder using the measurement card. Measure the length from the center bore to the outermost point. To do this, place the measurement card over the cylinder so that the hole in the measurement card is aligned with the center bore of the cylinder.
- Note the measured number. This value will determine whether the inner length of your new cylinder needs to be changed.



## 5. Determine the outer length of the cylinder

Use the removed cylinder as a model to assemble your Universal Cylinder to the correct length.

- Measure the **outer length** of the removed cylinder using the measurement card. Measure the length from the center bore to the outermost point. To do this, place the Measurement Card over the cylinder so that the hole in the Measurement Card is aligned with the center bore of the cylinder.
- Note the measured number. This value will determine whether you need to change the outer length of your new cylinder.

6. Adjust the outer length of your Nuki Universal Cylinder

Now take your Nuki Universal Cylinder.

Calculate the outer length of your Nuki Universal Cylinder

First, determine if you need to adjust the outer length.



Take your notes from step 2 & 5 and calculate

(Current Cylinder outer length in mm) MINUS (Overhang on the outside of your door in mm)

Is your result between 0 and 31 mm?

You don't need to adjust the outer length. Continue with calculating the inner length.

Is your result more than 31 mm?

Prepare the extension(s) and rod as shown in the table.

Calculation	Modular extensions (outside)				Rods (outside)
	5	10	15	20	
0–31 mm					30
32–36 mm	x				35
37–41 mm		x			40
42–46 mm	x	x			45
47–51 mm				x	50
52–57 mm	x			x	55
58–61 mm		x		x	60*
62–67 mm	x	x		x	65*
68–71 mm	2 x *	x		x	70*
72–77 mm	x	2 x *		x	75*
78–81 mm	x	x	x *	x	80*
82–87 mm	x	x		2 x *	85*

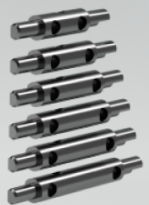
Modular extensions (outside)

⑥

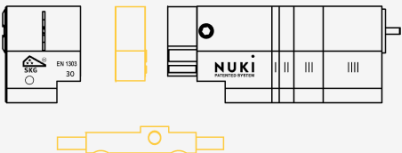
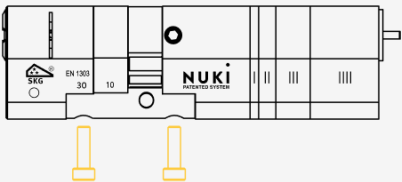


Rods

⑤



\*You need additional extensions for your door. Simply order them [from our partner M&C](#). Select the rod value from the table (60–85) for the outer length. If you do not need to adjust the inner length, choose 30.



To change the outer length, loosen the two screws on the bottom of the cylinder using the provided Allen key.

Pull out the rod. Attach the rod and add the modular extension(s) as shown in the table above.

**Tip:** Ensure that the modules can be smoothly assembled by aligning the recesses of the modules. Rotate them until they click into place.

Finally, insert the module with the keyway and tighten the two screws on the bottom of the cylinder again.

## 7. Adjust the inner length of your Nuki Universal Cylinder

### Calculate the inner length of your Nuki Universal Cylinder

First, determine if you need to adjust the inner length.



#### Take your notes from step 1 & 4 and calculate

(Current Cylinder inner length in mm) MINUS (Overhang on the inside of your door in mm)

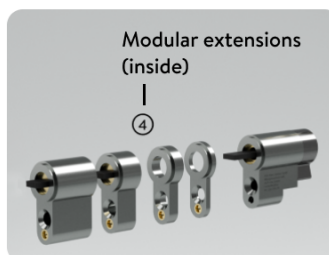
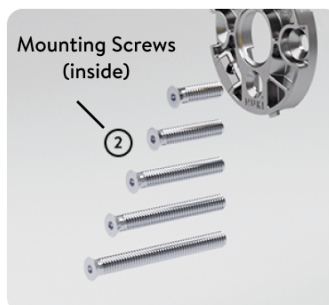
#### Is your result 61–62 mm?

You don't need to adjust the inner length. Continue with step 8.

#### Is your result lower than 61 or higher than 62 mm?

Take your Nuki Universal Cylinder and adjust the inner length.

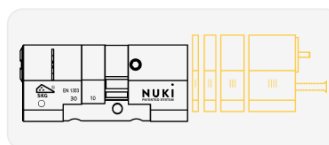
Calculation	Modular extensions (inside)				Mounting Screws (inside)								M&C
	I	II	III	IIII	15 mm	22.5mm	30 mm	37.5mm	45 mm	52.5mm	60mm	Shop	
0–25 mm					×								
26–27 mm	×				×								
28–30 mm		×			×								
31–32 mm	×	×			×								
33–35 mm			×			×							
36–37 mm	×		×			×							
38–40 mm		×	×			×							
41–42 mm	×	×	×				×						
43–45 mm				×			×						
46–47 mm	×			×			×						
48–50 mm		×		×				×					
51–52 mm	×	×		×				×					
53–55 mm			×	×				×					
56–57 mm	×		×	×					×				
58–60 mm		×	×	×					×				
61–62 mm	×	×	×	×					×				
63–65 mm				2 × *						×			70 mm
66–67 mm	×			2 × *						×			72.5 mm
68–70 mm		×		2 × *						×			75 mm
71–72 mm	×	×		2 × *							×		77.5 mm
73–75 mm			×	2 × *								×	80 mm
76–77 mm	×		×	2 × *								×	82.5 mm



\*You need additional extensions for your door. Simply order them [from our partner M&C](#).

Select your order based on your calculation and check in the M&C column.

If you do not need to adjust the outer length, choose 30.



a. Remove the screw in the front area of the Universal Cylinder. This screw fixes the individual modules together on the inside.

b. Remove the modular extensions. Only keep those that fit the length as displayed in the table.

## 8. Attach the mounting plate



After ensuring your cylinder's inner dimensions are the appropriate length, you can attach the mounting plate.

**Use the screw as indicated in the table. If you did not need to adjust the inner length, first remove the mounting screw from the cylinder and use this one.**

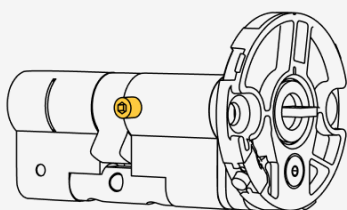
Take the mounting screw and fix the modules and the mounting plate.



### Example

Your result is 27 mm.

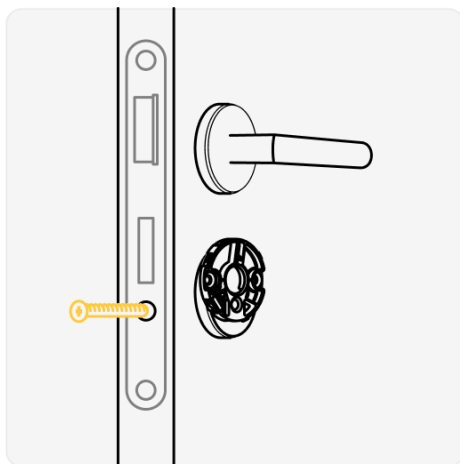
Remove the extensions II, III and IIII. Use the 15 mm mounting screw to attach the inner extension and the mounting plate.



**Now, remove the fixing screw.**

The fixing screw is located on the side of the cylinder.

## 9. Mount the Universal Cylinder to your door



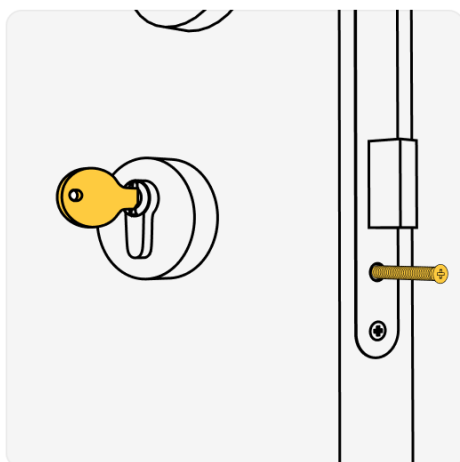
a. Insert the fully assembled cylinder into the door.

b. Reinsert the retaining screw into the door.



### Tip!

Place the key on the outside of the door and turn it.



### Can't turn your key?

Loosen the retaining screw.

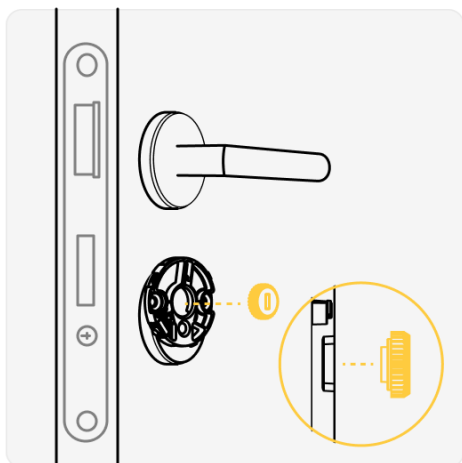
Move the cylinder back and forth a little while trying to turn the key. Only when you can turn the key, the cylinder is in the correct position.



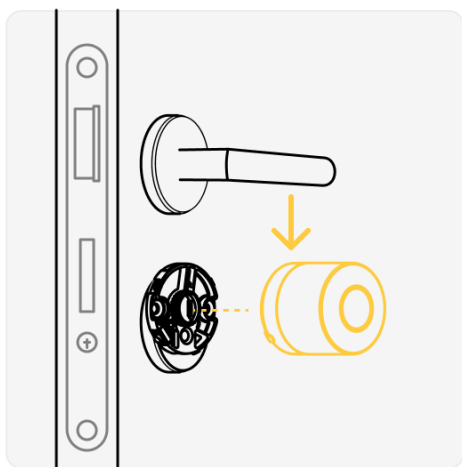
### Note:

For safety reasons, the overhang of the cylinder on the door's outer side should not exceed 3 mm.

## 10. Mount your Smart Lock Ultra



First, place the yellow adapter on the mounting plate.  
**Make sure you insert it with the protruding side first.**



Mount your Smart Lock. Make sure that the marking on the Smart Lock is at the top.  
The marking is a small notch, not to be confused with the connector for the magnetic cable.

Turn it to the right. The lettering "Nuki" is now centered at the top.



**You have successfully installed your Smart Lock Ultra with the Nuki Universal Cylinder!**



### **Note:**

Your universal cylinder corresponds to the **highest possible security class SKG\*\*\***. Be aware of the certification restrictions:

- Do you have a glass window through which your Smart Lock can be seen? Then the certification only applies if the glass is P4A laminated.
- Do you have a glass window through which your Smart Lock can be seen and is your door made of wood? Besides the P4A laminated glass you should also use a SKG (V) certified anti-drill / manipulation device.
- Do you have a frosted glass window? No problem, the certification is valid.