

Smart Lock Pro: Mounting and Installation

This instruction concerns:

SMART LOCK PRO

The Smart Lock is mounted on the inside of your door. Depending on your cylinder, there are two options to install it: with the clamp-on or the stick-on mounting plate.

In this instruction

[Installation with the clamp-on mounting plate](#)

[Installation with the stick-on mounting plate](#)



Tip!

We recommend using the Nuki App for mounting and installation.

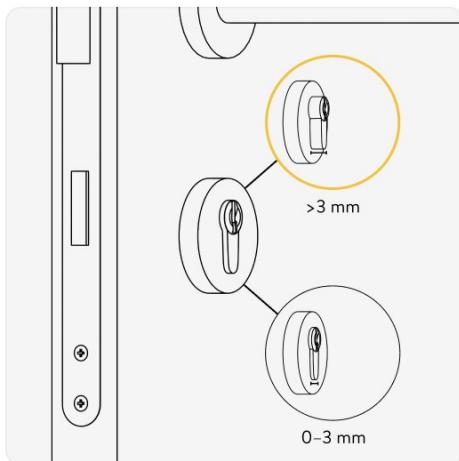


Check the base ring:

Before you start the mounting process, please check your base ring. Your Smart Lock comes with a **black or white base ring** already installed. **Push it all the way against the stainless steel body.** Make sure the ring does not cover the black mounting button on the back side of the Smart Lock. It must move freely. To change the base ring, press the small black mounting button that holds the base ring in place. You can then remove the ring and slide the other one onto the Smart Lock.



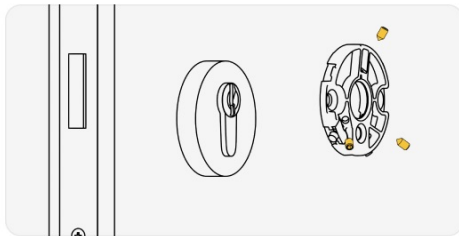
Installation with the clamp-on mounting plate



Measure the cylinder overhang.

Cylinder with **at least 3 mm overhang** on the inside of the door:

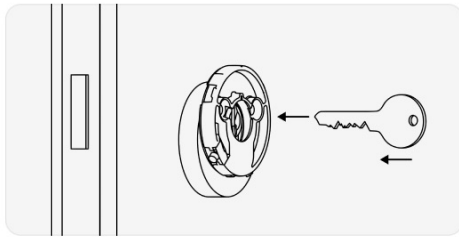
Fix the Smart Lock to your cylinder using three screws.



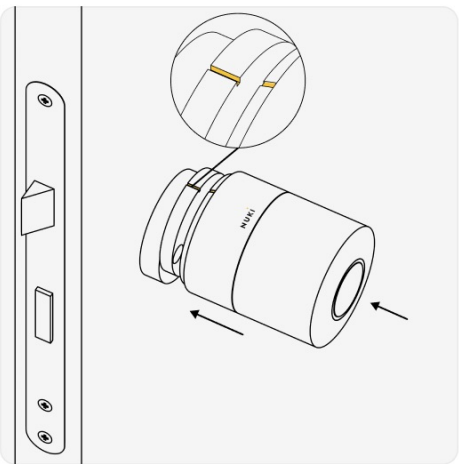
Take the clamp-on mounting plate from the packaging.

Screw-fix the mounting plate to the cylinder with the supplied wrench.

Please fix the screws carefully and without great physical effort to avoid damaging the cylinder.



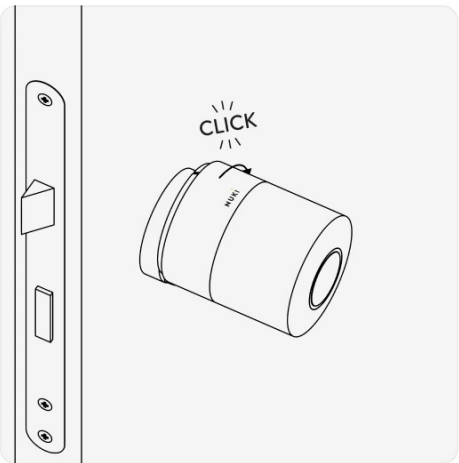
Put your key into the lock.



Mount your Smart Lock.

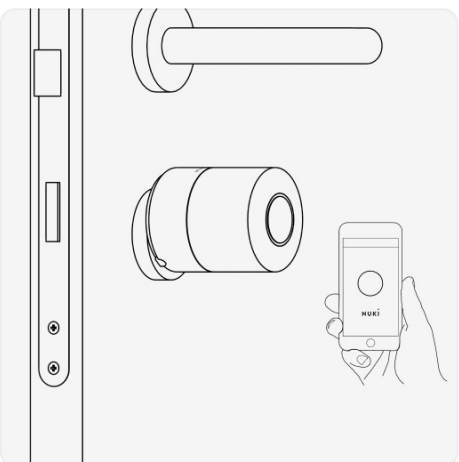
Make sure that the marking on the Smart Lock is at the top.

The marking is a small notch, not to be confused with the connector for the magnetic cable.



Turn it to the right.

The Smart Lock should click into place. The lettering "Nuki" is now centered at the top.



Download the Nuki App.

Open the app on your smartphone and set up your Smart Lock.

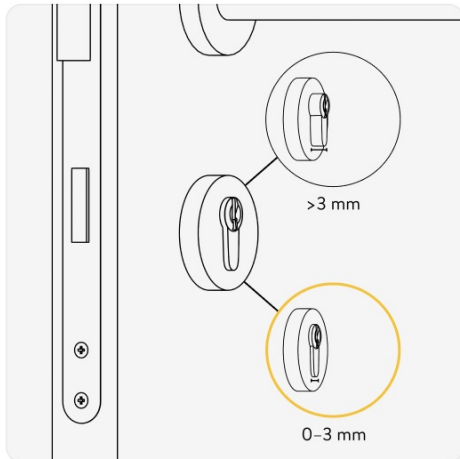
Installation with the stick-on mounting plate



Info: How stable is the stick-on mounting plate?

On a clean and level surface, the stick-on mounting plate will adhere permanently, as long as it completely lies on the surface. If it is used correctly, we guarantee permanent and stable assembly.

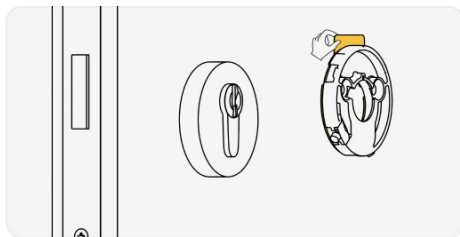
The stability of the adhesive surface particularly depends on the size of the surface to which the mounting plate adheres. The larger the area of the adhesive surface, the more stable the assembly.



Measure cylinder overhang.

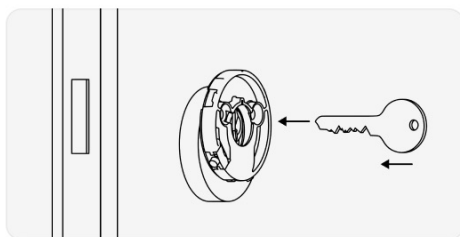
Cylinder with **less than 3 mm overhang** on the inside of the door:

The Smart Lock is glued to your door with a special adhesive pad.

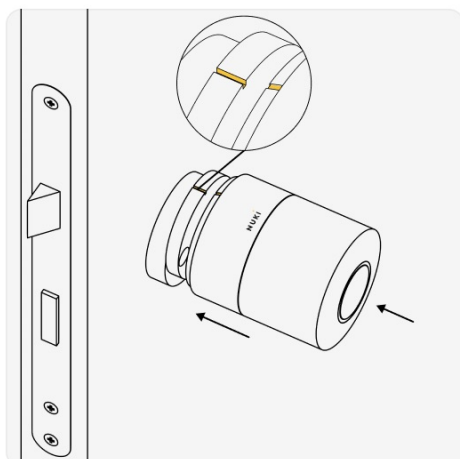


Take the clamp-on mounting plate from the packaging.

Peel off the protective backing and stick the mounting plate to your door.



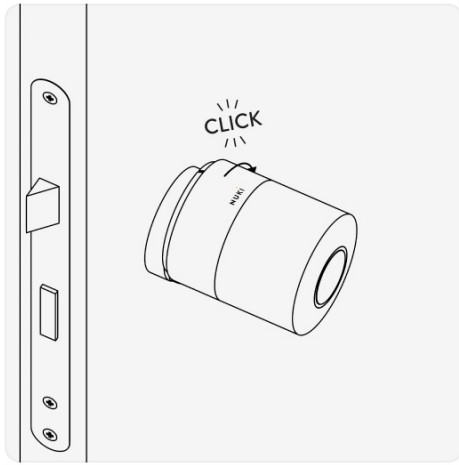
Put your key into the lock.



Mount your Smart Lock.

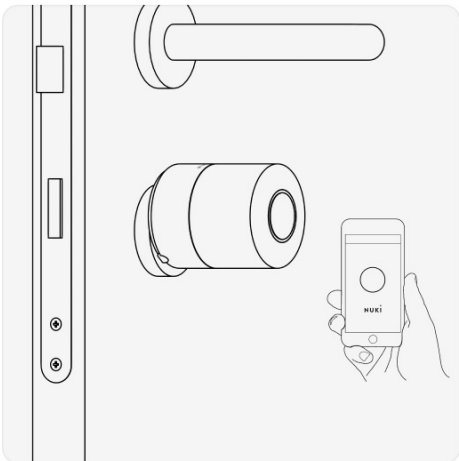
Make sure that the marking on the Smart Lock is at the top.

The marking is a small notch, not to be confused with the connector for the magnetic cable.



Turn it to the right.

The Smart Lock should click into place. The lettering "Nuki" is now centered at the top.



Download the Nuki App.

Open the app on your smartphone and set up your Smart Lock.