

# Smart Lock with removable batteries: Mounting and Installation

This instruction concerns:

SMART LOCK GO

SMART LOCK 4<sup>th</sup> GENERATION

ALL PREVIOUS GENERATIONS

The Smart Lock is mounted on the inside of your existing cylinder. Depending on your cylinder, there are two options to install it: with the clamp-on or the stick-on mounting plate.

## In this instruction

[Installation with the clamp-on mounting plate \(Version A\)](#)

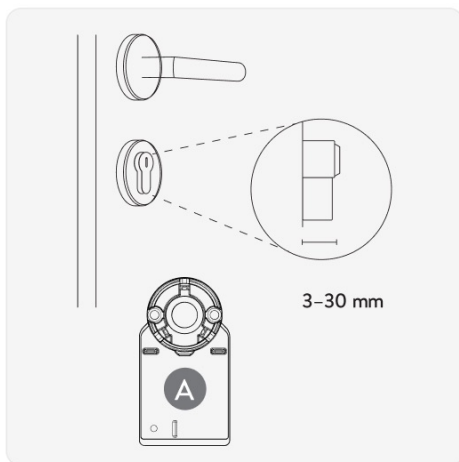
[Installation with the stick-on mounting plate \(Version B\)](#)



### Tip!

We recommend using the Nuki App for mounting and installation.

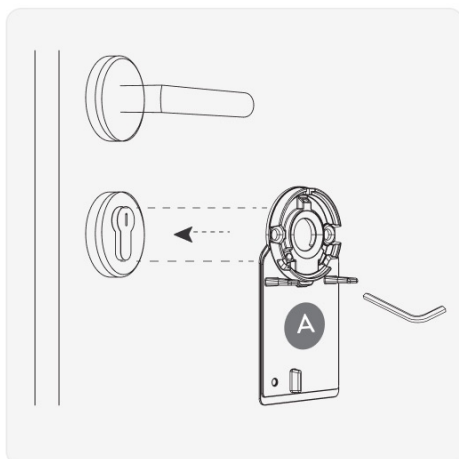
## Installation with the clamp-on mounting plate (Version A)



### Measure the cylinder overhang.

Cylinder has **at least 3 mm overhang** on the inside of the door:

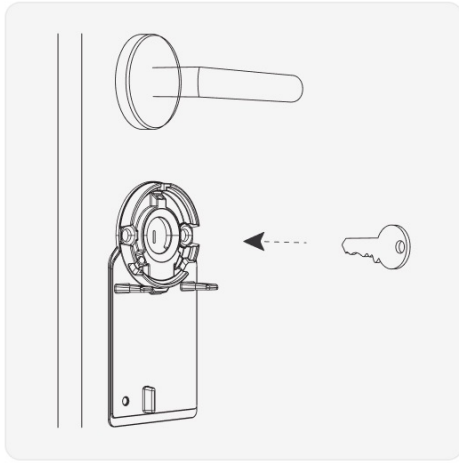
The Smart Lock is fixed to your cylinder using three screws.



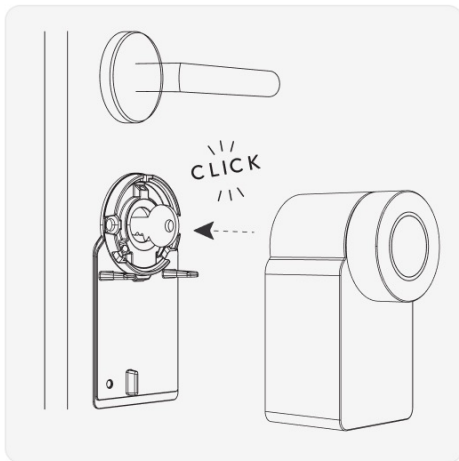
### Take the clamp-on mounting plate A from the packaging.

Screw-fix the mounting plate to the cylinder with the supplied wrench.

**Please fix the screws carefully and without great physical effort** to avoid damaging the cylinder.

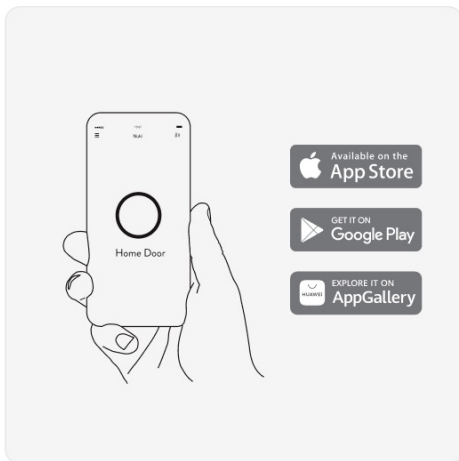


**Put your key into the lock.**



**Attach your Smart Lock to the mounting plate.**

The Smart Lock should click into place.



**Download the Nuki App.**

Open the app on your smartphone and set up your Smart Lock.

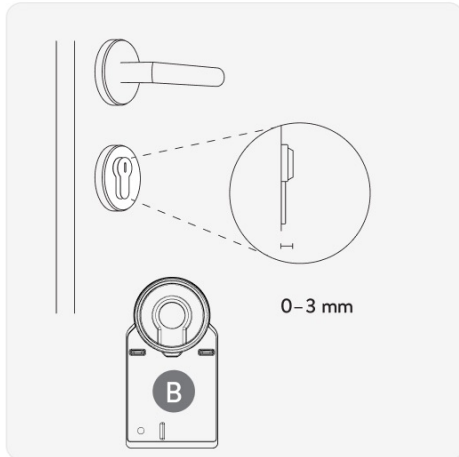
## Installation with the stick-on mounting plate (Version B)



### Info: How stable is the stick-on mounting plate?

On a clean and level surface, the stick-on mounting plate will adhere permanently, as long as it completely lies on the surface. If it is used correctly, we guarantee permanent and stable assembly.

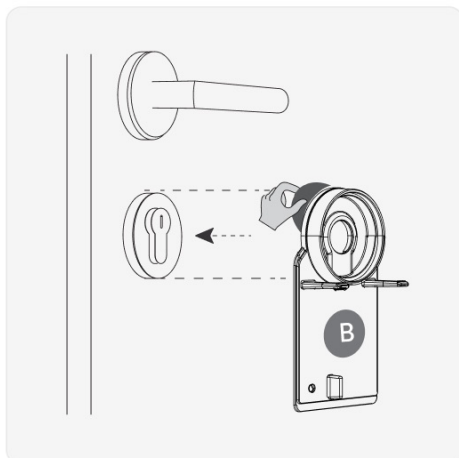
The stability of the adhesive surface particularly depends on the size of the surface to which the mounting plate adheres. The larger the area of the adhesive surface, the more stable the assembly.



### Measure the cylinder overhang.

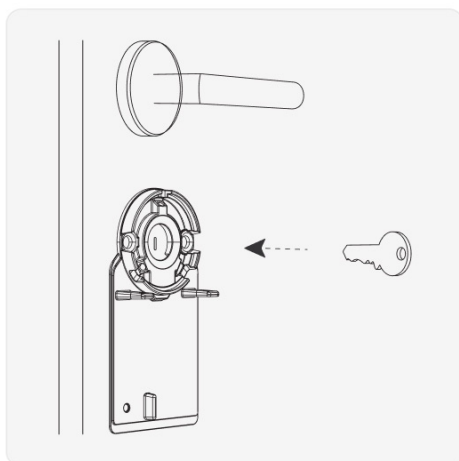
Cylinder with **less than 3 mm overhang** on the inside of the door:

The Smart Lock is glued to your door with a special adhesive pad.

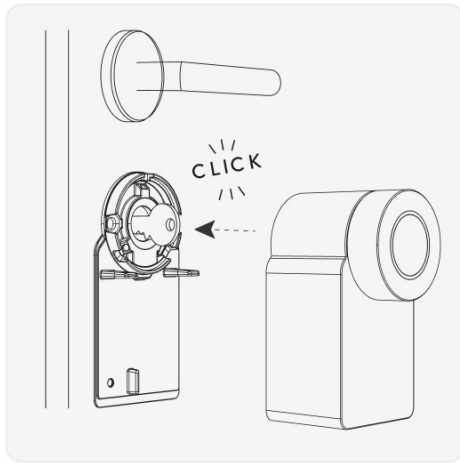


### Take the stick-on mounting plate B from the packaging.

Peel off the protective backing and stick the mounting plate to your door.

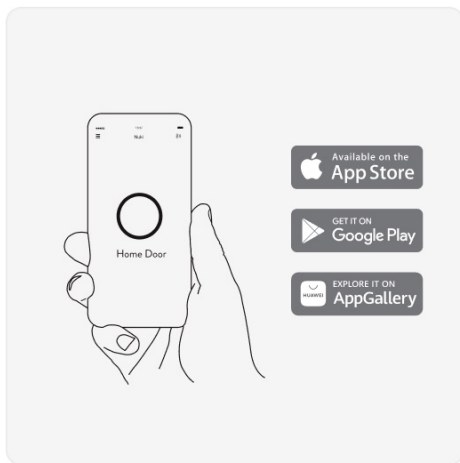


### Put your key into the lock.



### **Attach your Smart Lock to the mounting plate.**

The Smart Lock should click into place.



### **Download the Nuki App.**

Open the app on your smartphone and set up your Smart Lock.