

Smart Lock Ultra Nordics: Mounting and Installation

This instruction concerns:

SMART LOCK ULTRA NORDICS

The mounting of the **Smart Lock Ultra Nordics** on the inside of your door is easy. You can find additional installation information in this PDF.

In this instruction

Steps before mounting

A) Mounting instructions for a knob on the inside

B) Mounting instructions for a key on the inside



Tip: Nuki App required

You will need the Nuki App to mount the Smart Lock. Simply open the Nuki App, tap on the menu (three bars at the top left corner), and select "Manage devices". If you are new to Nuki, open the App and select "Set up device". The Nuki App will guide you through mounting. The following instructions will give you some additional information concerning the mounting.

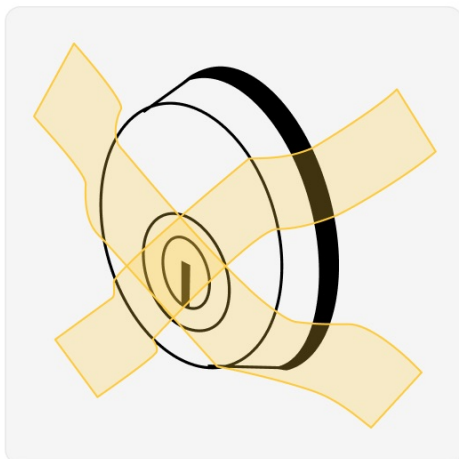


Check the base ring:

Before you start the mounting process, please check your base ring. Your Smart Lock comes with a **black or white base ring** already installed. **Push it all the way against the stainless steel body.** Make sure the ring does not cover the black mounting button on the back side of the Smart Lock. It must move freely. To change the base ring, press the small black mounting button that holds the base ring in place. You can then remove the ring and slide the other one onto the Smart Lock.



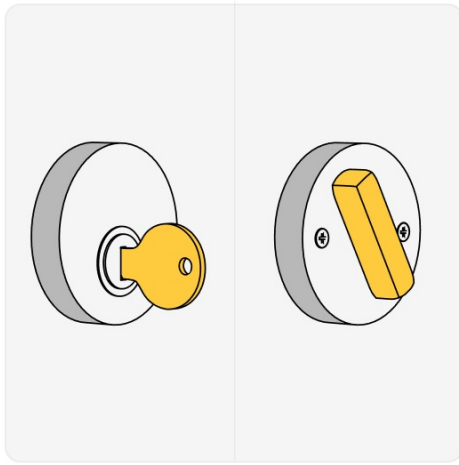
Steps before mounting



Secure the lock on the outside of your door

Attach the door lock to the outside of your door using the supplied adhesive strip.

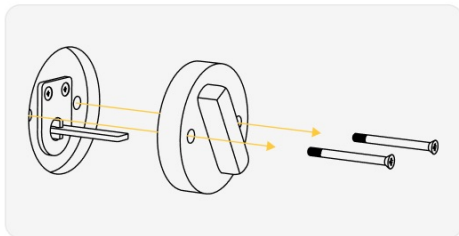
This ensures that it cannot come loose while mounting the Smart Lock.



Knob or key on the inside

Depending on whether you lock your door on the inside with A) a knob or B) a key, the subsequent installation steps will differ.

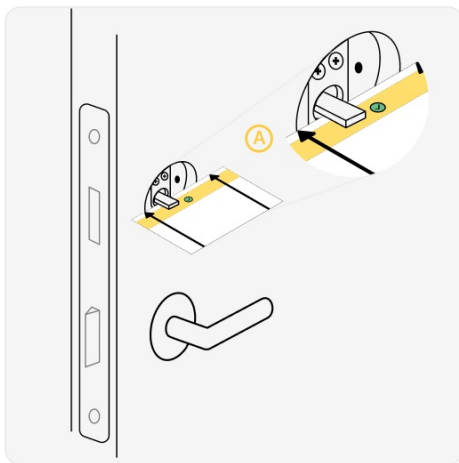
A) Mounting instructions for a knob on the inside



1. Remove the knob on the inside of your door

Remove the screws on the inside of your lock. Take off the knob and cover. You will need the screws later to attach the mounting plate.

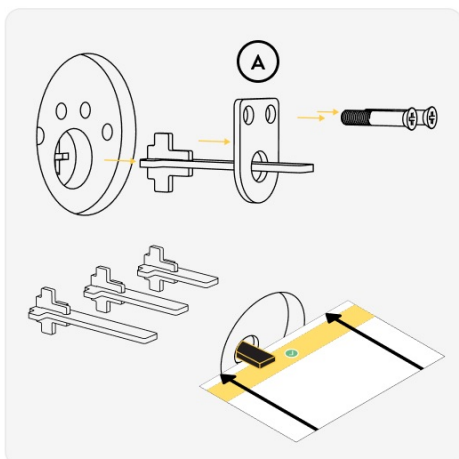
After you have removed the knob, you can see the tailpiece.



2. Measure the tailpiece overhang

Use the measurement card to measure the tailpiece overhang on the inside of your door. Place the card on the door and check if the tailpiece is within the markings.

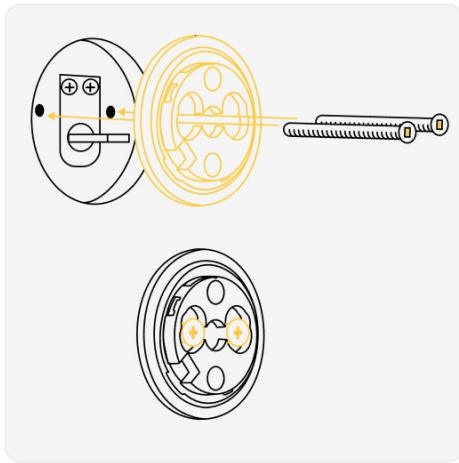
- ✓ Is the tailpiece's length within the green area?
 You can directly attach the mounting plate (Step 4).
- ✗ Is the length of the tailpiece not within the green range? Replace the tailpiece (Step 3).
 This is possible, both when the tailpiece exceeds the maximum length as well as when it falls below the minimum length.



3. Replace the tailpiece

Is the length of the tailpiece not within the green range of the measurement card? Replace the tailpiece.

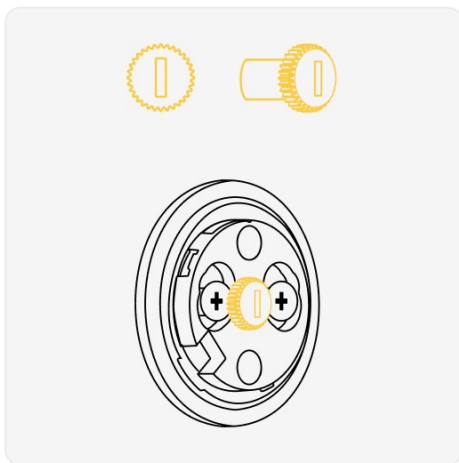
1. First, remove the screws to take the D-plate (A) off.
2. Now, you can pull the tailpiece out of the cylinder.
3. Replace the tailpiece with one of the included tailpieces that is the right length. Use the measurement card to measure the right length. The length of the tailpiece should be within the green area.
4. Reattach the previously removed D-plate with the screws.



4. Attach the mounting plate

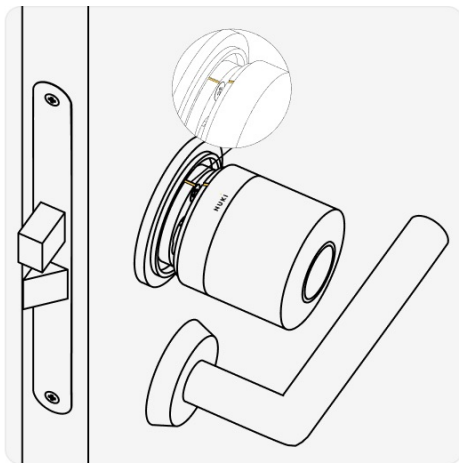
The marking on the mounting plate shows you how to attach it. Make sure that the marking on the mounting plate is at the top.

Fix the mounting plate to the door using the screws you removed from your door earlier.



5. Place the adapter

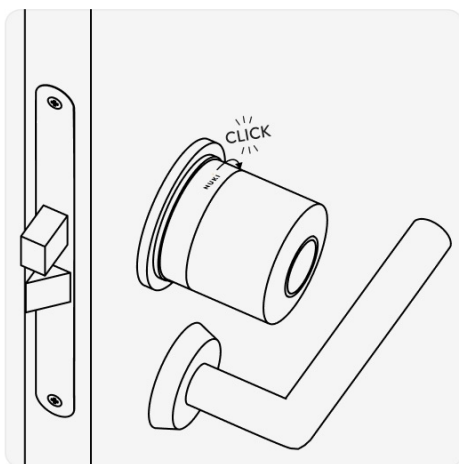
Place the adapter on the tailpiece to connect it to the Smart Lock in the next step.



6. Mount your Smart Lock

Make sure that the marking on the Smart Lock is at the top.

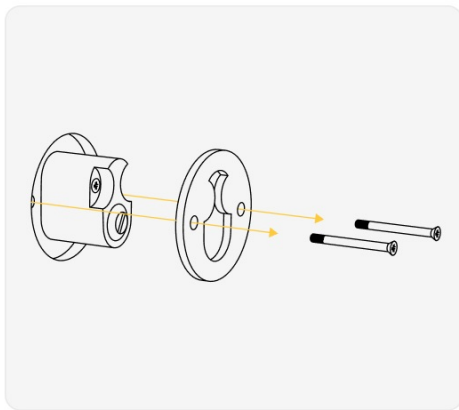
The marking is a small notch, not to be confused with the connector for the magnetic cable.



7. Turn it to the right.

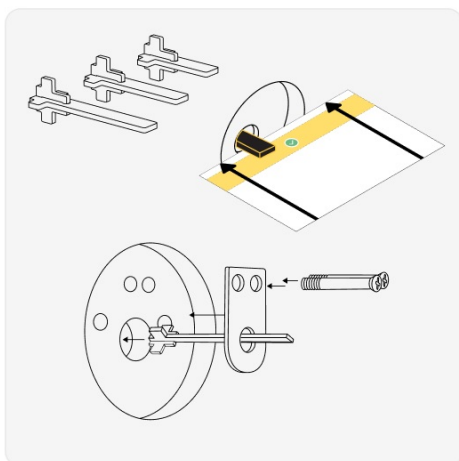
The Smart Lock should click into place. The lettering "Nuki" is now centered at the top.

B) Mounting instructions for a key on the inside



1. Remove the cylinder on the inside of your door

Remove the screws on the inside of your lock. Take off the cylinder.

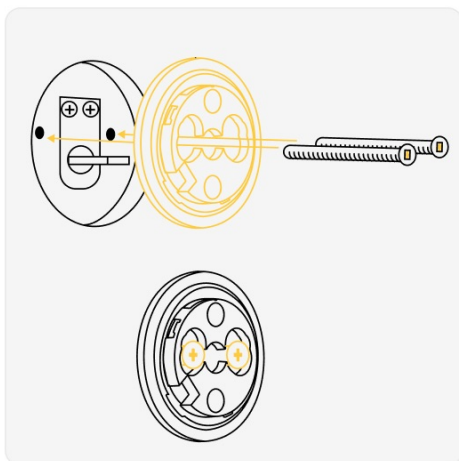


2. Choose and mount the tailpiece

Choose the right tailpiece for your cylinder.

Use the measurement card to measure the right length. The length of the tailpiece should be within the green area.

Reattach the previously removed D-plate with the screws.

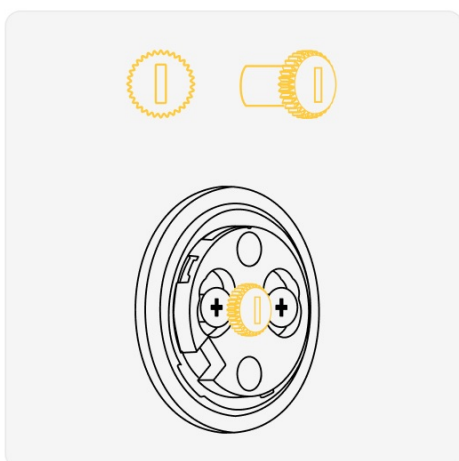


3. Attach the mounting plate

The marking on the mounting plate shows you how to attach it.

Make sure that the marking on the mounting plate is at the top.

Fix the mounting plate to the door using the screws you removed from your door earlier.



4. Place the adapter

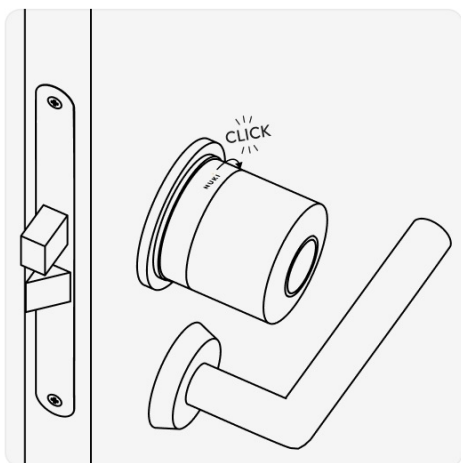
Place the adapter on the tailpiece to connect it to the Smart Lock in the next step.



5. Mount your Smart Lock

Make sure that the marking on the Smart Lock is at the top.

The marking is a small notch, not to be confused with the connector for the magnetic cable.



6. Turn it to the right.

The Smart Lock should click into place. The lettering "Nuki" is now centered at the top.